



RV & TRAILER ACCESS

TOP TIER SINCLAIR FUELS

DIESEL + HI-FLOW PUMPS

PROPANE REFILL AND BOTTLE EXCHANGE

US POST OFFICE

WYO LOTTO

GROCERIES & ICE

CAMPING SUPPLIES & FIREWOOD

FISHING GEAR & LIVE BAIT

FISHING & HUNTING LICENSES

FULL LIQUOR STORE

WIDE SELECTION OF BEER, WINE AND SPIRITS

UNIQUE SOUVENIRS AND LOCAL ART

AIRBNB ROOMS

SHADED PICNIC AREAS

Explore
SUNDANCE
Wyoming



I-90 EXIT 205 | 5930 OLD HWY 14, BEULAH, WY
307-643-2185 | STATELINESTATION.COM

2024 VISITOR GUIDE
& BUSINESS DIRECTORY

WELCOME TO SUNDANCE

Let the name Sundance evoke images of rowdy Butch Cassidy & the Sundance Kid leading the Wild Bunch on the longest stretch of train and bank robberies in Old West history. Then imagine serene Native American Villagers encamped at the base of majestic Sundance Mountain where they performed the sacred Sun Dance. Immerse yourself in our true west story where outlaws ran wild, and two incomparable cultures were about to collide.

This historic gateway Wyoming town is only 28 miles from America's First National Monument, Devils Tower. The Sundance area offers uncrowded, four-season outdoor activities in over 200,000 acres of the Bearlodge District of the Black Hills National Forest. In the community, excellent restaurants and relaxing bars, motels, resorts and quaint retail shops await you at the end of the day.

Be sure to visit the Crook County Museum in its new location and have your picture taken with the Sundance Kid, in the town *where The Kid got his name!*



www.SundanceWyoming.com

 SundanceWYChamber

(307)283-1000 • PO Box 1004 • Sundance, WY 82729

Chamber@SundanceWyoming.com

Chamber Officers

Bruce Speidel, President - Trisha Habeck, Vice President

Melissa Purvis, Secretary

Andy Miller, Treasurer

Crook County Sheriff's Office (307) 283-1225

Poison Control (800) 222-1222

Sundance Fire Department (307) 283-1296

Wyoming Highway Patrol (307) 283-1035

USFS Bearlodge Ranger District (307) 283-1361

Crook County Medical Services (307) 283-3501

Sundance City Hall (307) 283-3451

Sundance Clinic (307) 283-2476

Sundance Swimming Pool (307) 283-2133

INDEX

Outdoor Recreation	2-3
Adventure Map	4-5
Climbing Devils Tower	7
Sundance Chamber Directory	8-11
Sundance City Map	16-17
Sundance Community	18-25
Events	26-31

Page Photo Courtesy of David Porter

Cover Photos Courtesy of David Porter, Larry Ulrick & Jamie Jessen

Paid for in part by DevilsTowerCountry.com

OUTDOOR RECREATION

We invite you to go out and PLAY!

Golfing - Walking/Hiking Trails

Scenic Horse Back Trail Rides - Fatbiking

Geocaching - GPS Walking Tours

Shopping/Art - Pool - Skate Park

Tubing Down the River - Rodeos/Ropings

Hunting - Fishing - Off Road Adventures

Wherever you call home, you will find the perfect fit in your search for adventure in Sundance, Wyoming. The seasons talk plainly to us here in Sundance, and they dictate the direction we take to enjoy breathtaking escapades that thrill our hearts!

In spring, summer and fall, hiking in the beautiful Bearlodge Mountains and the Black Hills National Forest of Wyoming will suit almost anyone. In spring, the hills are spread with numerous wild flowers. In summer, the prairie grass waves in the breeze as you make your way to higher and cooler elevations. In fall, the trees wear their most colorful attire, and wildlife enjoy the seasons just as we do. And, of course, the winter wonderland that Sundance enjoys is nothing short of spectacular. Snow machines, skis, snow shoes, fat biking and sometimes just warm hiking boots will carry you to new heights of beauty.



Bearlodge District of the Black Hills National Forest

- Hiking, mountain biking, horseback riding, geocaching, camping, motor vehicle and ATV trials; 50 miles of single-track trails.
- Sundance Horse Camp Trailhead offers primitive campsites, corrals and water on site.
- Four convenient trail heads
- 200,000 acres of public Forest Service land
- 200 miles of forest roads
- 60 miles of groomed snowmobile trails, also plentiful cross-country skiing and snowshoeing
- 19,000 acres of private land walk-in hunting areas open to the public <https://wgfd.wyo.gov/Public-Access/Walk-In-Hunting/Crook-County>
For more information

Photos on page Courtesy WY Dept. of Tourism

Abundant Hunting & Fishing Opportunities

Bearlodge Mountains & Black Buttes

Public access, camping available

Elk, mountain lion, antelope, mule deer, whitetail deer, turkeys

Sand Creek

Blue-ribbon trout stream

16 miles east of Sundance

Public access

Tubing, fishing, swimming and camping

Brown trout and rainbow trout

Keyhole State Park

32 miles west of Sundance

Boating, fishing, swimming and camping

Well-stocked lake

Daily use fee: \$7 per vehicle, per day (residents);

\$12 per vehicle, per day (non-resident)

For more information, including camping & other fees please visit:

wyoparks.wyo.gov



Photo Courtesy of Sundance Girl Photography

Off-Road Adventure Awaits



The Bearlodge District of the Black Hills National Forest covers over 200,000 acres and has some very diverse ATV trails and forest roads. There are two off-road trailheads in the Bearlodge: Blacktail Creek Trailhead near Hulett and Reuter Campground Trailhead near Sundance. The trails cover high ridges and low valleys with an abundance of wildlife including elk, deer, turkeys and antelope. There are forest roads to challenge any rider. The SCGMBA grooms the Bearlodge for Fatbiking and also have a permit to groom the Fish Canyon Black Buttes. There are two improved campgrounds as well as rough camping throughout the forest.

The trails cover high ridges and low valleys with an abundance of wildlife including elk, deer, turkeys and antelope. There are forest roads to challenge any rider. The SCGMBA grooms the Bearlodge for Fatbiking and also have a permit to groom the Fish Canyon Black Buttes. There are two improved campgrounds as well as rough camping throughout the forest.

- **ATV & Snowmobile Permits Available at**
Rapid Stop Conoco 307-283-2240
20059 US Hwy 14, Sundance; Interstate 90 exit 185
- **Maps available at**
 - www.sundancewyoming.com/explore-sundance/recreation
 - Bearlodge Ranger District
307-283-1361;
101 S 21st Street
Sundance, WY

REAL WEST ADVENTURE

1 Reuter Campground/Trailhead

Campground has primitive campsites with pit toilets and water available. Trailhead for Carson Draw trail system in the southern Bearlodge Mountains, biking, hiking, horseback, cross country skiing. Also trailhead for ORV or snowmachine trails throughout the Bearlodge Mountains.

2 Blacktail Creek Trailhead

Trailhead offering access to the northern Bearlodge Mountains. ATV, ORV and snowmachine trails.

3 Warren Peak Lookout Tower

FREE attraction, 6,650 ft. elevation. Active fire lookout for the northern hills, once was the first nuclear powered radar station in the country. Climb the tower for a great view of the area and beautiful sunsets.

4 Black Buttes / Fish Canyon Rec Area

Trailhead on Canyon Springs Road for hiking, biking, snowshoeing and fat biking in the winter. Non-motorized.

5 Cook Lake Campground / Shallow Tail Hiking Trail

Primitive campsites with pit toilets and water available. Cook Lake is stocked with trout. Hiking, biking and kayaking.

6 Reuters Grave

Grave site of an early settler / prospector who settled in the Bearlodge Mountains. One of Reuters mines can be seen just further up the trail.

7 Forest Service Office

Information for Bearlodge Mountains including ATV Maps and hunting information.

8 Sundance Pond

Pond is stocked with trout. Hiking, kayaking, play area and picnicking.

9 Sundance Horse Camp Trailhead

Primitive campsites with horse corrals. Trailhead for several different trails into the southern Bearlodge Mountains. Hiking, biking and horseback.

10 Sand Creek Rec Area

Several fishing access areas along Sand Creek, class 1 trout stream. Primitive campsites with pit toilets. Hiking, biking and float tubing.

11 Dugout Gulch Botanical Trail

Hiking, horseback riding, bicycling and cross-county skiing. No motorized vehicles allowed.

12 Devils Tower National Monument

A Native American sacred site. Hiking & climbing.



Photo Courtesy of John Balk

Devils Tower National Monument

13 Rapid Stop Conoco Gas Station

ORV Permits

14 Sundance Hardware & Sporting Goods

Hunting & fishing licenses, ammo and guns.

15 Wyoming Visitor Center

Learn more about Wyoming with local, expert advice from the staff. Maps, brochures and other resources available.

16 Vore Buffalo Jump

Natural sinkhole used by Plains Indians as a trap for bison. Premier archaeological site with historical, scientific and educational exhibits.

17 Crook County Museum & Gallery

Come see the history of the Black Hills of Northeastern Wyoming and the newly remodeled Old Stoney building, home of the Crook County Museum.

18 Geocache Roundup

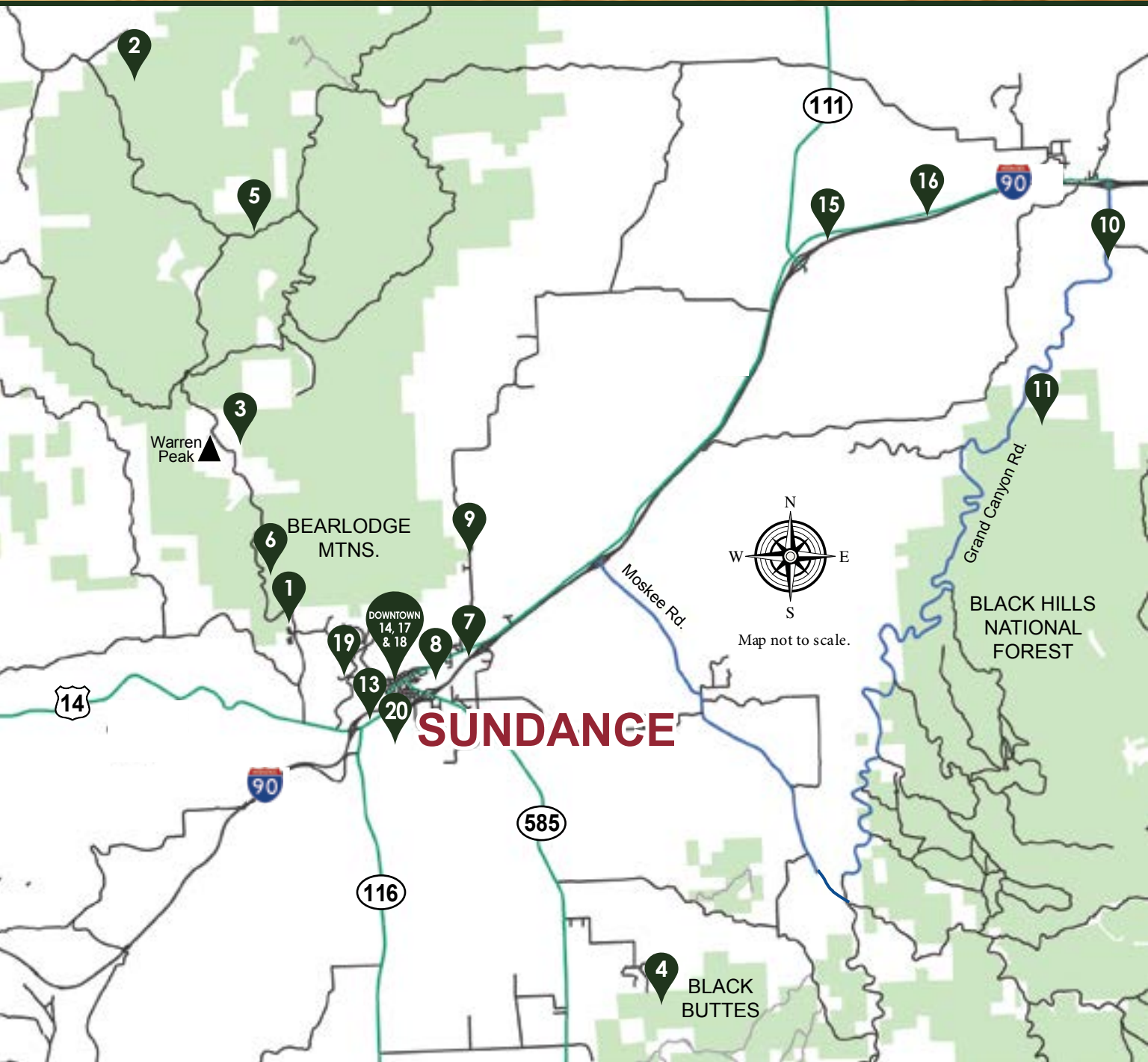
Sundance Geocache Roundup is a global high-tech treasure hunt where participants can use a combination of online clues and GPS coordinates to find hidden treasures left by history loving explorers. More information on page 30 or at Crook County Museum.

19 Scenic Trail Rides

Ride the beautiful Bearlodge Mountains near Sundance, WY. Offering trail rides in July & August, dates vary so please contact to schedule.

20 Sundance White Ranch Park

Hike, bike and explore on 100 acre park at the base of Sundance Mountain only 1.25 miles from downtown.



REAL WEST ADVENTURE

Your first stop in Sundance

- ✓ Wyoming souvenirs
- ✓ Books
- ✓ Gifts
- ✓ Home décor
- ✓ Pharmacy
- ✓ Toys
- ✓ Jewelry



Taking time to listen & care.



224 Main Street
Sundance, WY 82729
307.283.3883

This pharmacy is independently owned and operated under a license from Health Mart Systems, Inc.

Nearby Parks

Sundance is central to some of this country's greatest treasures. Stay in Sundance and see it all!

Keyhole Reservoir, WY State Park – 32 mi.

Spearfish Canyon – 33 mi.

Devils Tower National Monument – 27 mi.

Crazy Horse Monument – 86 mi.

Mount Rushmore National Memorial – 102 mi.

Yellowstone National Park – 365 mi

DEVILS TOWER

- **America's First National Monument**
- **Visitor Center**
- **1.3 mile "Tower Trail"**
- **Over 7 miles of walking paths**
- **Hiking, rock-climbing and camping**
- **27 miles northwest of Sundance**
- **www.nps.gov/deto**

Photos Courtesy WY Dept. of Tourism

Climbing Devils Tower

Devils Tower is one of North America's finest free climbing areas. Hundreds of parallel cracks divide Devils Tower into large hexagonal columns, making it an ideal destination for traditional crack climbing.

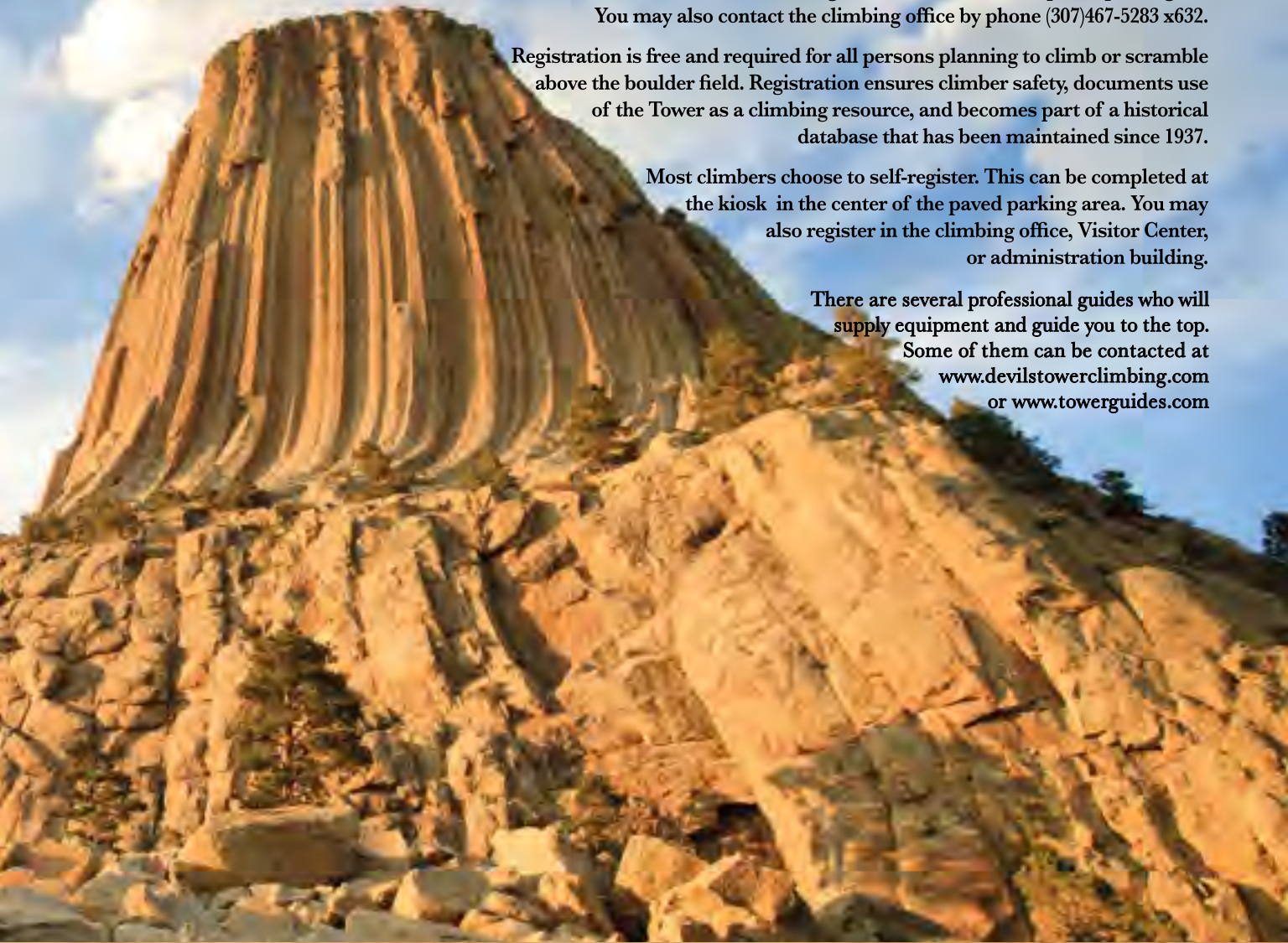
There are several different routes to the top. Visitors wishing to consult experienced Devils Tower climbers can check in at the building on the west side of the paved parking lot.

You may also contact the climbing office by phone (307)467-5283 x632.

Registration is free and required for all persons planning to climb or scramble above the boulder field. Registration ensures climber safety, documents use of the Tower as a climbing resource, and becomes part of a historical database that has been maintained since 1937.

Most climbers choose to self-register. This can be completed at the kiosk in the center of the paved parking area. You may also register in the climbing office, Visitor Center, or administration building.

There are several professional guides who will supply equipment and guide you to the top. Some of them can be contacted at www.devilstowerclimbing.com or www.towerguides.com



MEMBER DIRECTORY

ATTRACTIONS & ART

1875 Gallery 307-283-3301

PO Box 63 / 120 N 4th St; Sundance, WY

Bruce Speidel Gallery 307-290-2089 | bruceSpeidel.com

PO Box 181 / 203 E. Main Street; Sundance, WY

Crook County Museum & Art Gallery 307-283-3666

crookcountymuseum.com

PO Box 63 / 120 N 4th St; Sundance, WY

High Plains Western Heritage Center 605-642-9378

westernheritagecenter.com | 825 Heritage Dr, Spearfish SD

Sundance White Ranch Park 307-290-2544

whiteranchpark.com | PO Box 903 / 18 Hwy 116; Sundance, WY

Tri-State Museum & Visitor Center 605-723-1200

415 Fifth Ave, Belle Fourche, SD 57717

Vore Buffalo Jump 307-266-9530

www.vorebuffalojump.org | PO Box 369

Old US Hwy 14 /I-90 Exits 199 & 205; Beulah, WY 82712

CHURCHES

Chapel of Faith 307-283-2046 | chapeloffaith.org

PO Box 1033 / 116 S. 3rd; Sundance, WY

Good Shepherd Episcopal Church 307-283-1022

602 Main St; Sundance, WY

Sundance United Methodist Church 307-283-1954

Sundancewumc.org | 306 E Ryan St; Sundance, WY

CONTRACTORS & SERVICES

American Tree & Forestry Care 307-200-9676 | wytrees.com

603 S 4th Street; Sundance, WY

Croell 307-283-2221 | www.croell.com

PO Box 1352 / 2719 S. US Hwy 585; Sundance, WY

Engineering Associates 307-283-3633 | eaengineers.com

PO Box 130 / 420 E. Cleveland; Sundance, WY

Four Aces Fabrication 307-622-1605 fouracesfabrication.com

PO Box 590 / 301 S 27th St; Sundance, WY

Grossenburg Implement 307-283-2971

262 W Hwy. 14; Sundance, WY

Interstate Engineering 307-283-3675 | interstateeng.com

PO Box 828 / 315 Main Street; Sundance, WY

JW Services, LLC 307-680-0139

jwservicesllc.com | 519 State Hwy 116; Sundance, WY

K&K Builders 307-756-3967 | kkbuildersllc.com

PO Box 956 / 445 Inyan Kara Rd; Sundance, WY

Klocker Trucking 307-290-2577

PO Box 1111 / 520 S. 21st Street; Sundance, WY

Martin/Martin Wyoming 307-283-3900

mmwyo.com | PO Box 1067; Sundance, WY

Materi Contracting, LLC 307-283-2118

2116 State Hwy 585; Sundance, WY

ONEOK 406-478-0981 | oneok.com

130 Commerce Dr; Spearfish, SD

Sundance Custom Steel 307-283-1820

sundancecustomsteel.com

PO Box 710 / 297 S 27th St; Sundance, WY

Sundance Heating & A/C 307-281-1732

PO Box 1504; Sundance, WY

TCB Enterprises, LLC 307-283-3715

PO Box 696 / 808 Industrial Ave; Sundance, WY

Timberline Services 307-283-2818

PO Box 867 / 623 Industrial Ave; Sundance, WY

Z Lazy Y Services, LLC 605-210-1007

PO Box 481; Sundance, WY

DINING

77 Steakhouse & Saloon 307-467-5773

www.devilstowergolf.com/events/restaurant

77 Tower View Dr; Hulett, WY 82720

Buffalo Jump Saloon & Steakhouse 307-643-7173

buffalojumpwyoming.com | 5877 Old Hwy 14; Beulah, WY

Longhorn Saloon & Grill 307-283-3644

longhornsaloongrill.com PO Box 785 / 214 Main; Sundance, WY

Turf Bar & Grill 307-283-1669

PO Box 303 / 121 Cleveland; Sundance, WY

Uncle Louies Diner, Inc. 307-283-3620

unclelouiesdiner.com | 203 Cleveland St; Sundance, WY

Wild West Espresso 360-929-3183

PO Box 801 / 107 N. 3rd Street ; Sundance, WY

GROCERY, FUEL & VEHICLE MAINT.

Custom Auto & Truck 307-283-2301 | customautotruck.com
PO Box 1253 / 2723 Hwy 585; Sundance, WY

Decker's Market 307-283-3155 | deckersmarket.com
PO Box 768 / 106 N 7th; Sundance, WY

Meadowlark Trailer 307-281-2336 | meadowlarktrailer.com
2409 E Cleveland St; Sundance, WY

Rapid Stop Conoco 307-283-2240
20059 U.S. 14; Sundance, WY

Rolling Metal Sinclair 307-283-2465
PO Box 876 / 504 Cleveland; Sundance, WY

Plains Towing & Recovery 307-283-2000
plains towing.com | 3 Limestone Pit Rd; Sundance, WY

State Line Station 307-643-2185 | statelinestation.com
5930 Old Hwy 14; Beulah, WY 82712 | Exit 205, I-90

Sundance Fas-Break Auto Glass 307-290-0284
PO Box 504; Sundance, WY

Sundance Travel Center 307-283-1200
2723 E Cleveland; Sundance, WY

TCB Enterprises, LLC 307-283-3715
PO Box 696 / 808 Industrial Ave; Sundance, WY

Tracy Motor Company 307-283-1355
PO Box 970 / 322 E. Cleveland; Sundance, WY

LIBRARY

Crook County Public Library 307-283-1008
crookcountylibrary.org | 414 Main Street; Sundance, WY

MEDIA & ENTERTAINMENT

KYDT - KBFS "Dirt Road Radio" 307-756-9750
PO Box 1031, Moorcroft, WY 82721

Moxie Marketing of the Midwest LLC
605-568-0181 | www.moxiemarketingmw.com
PO Box 2015; Belle Fourche, SD 57717

Quik Signs 605-717-7446 | QuikSigns.com
2925 E. Colorado; Spearfish, SD 57783

Sundance Times & Fine Print Book Shop 307-283-3411
sundancetimes.com | PO Box 400 / 311 Main St; Sundance

Waves Web Design 307-265-2157
waveswebdesign.com | PO Box 426; Casper, WY 82601

LODGING

Bear Lodge Motel
307-283-1611 | 218 Cleveland; Sundance, WY

Bunkhouse Bed & Breakfast
307-896-9190 | 186 Hwy 111; Aladdin, WY 82710

Deer Lodge Motel
307-283-3737 | 26 Hwy 585; Sundance, WY

Diamond 7 Bar Guest Ranch
307-467-5612 | www.diamond7bar.com
353 Lane Jones County Rd, Alva, WY

JC Stage Stop Resort
307-896-9134 | 78 Hay Creek Rd; Aladdin, WY

Mountain View RV Park & Campground
307-283-2270 | www.mtnviewcampground.com
117 Government Valley Rd; Sundance, WY

Ranch A | Historic Site
307-643-3101 | www.rancha.com
481 Sand Creek Rd; Beulah, WY

Serena Inn & Suites
307-283-2800 | 2719 E Cleveland St; Sundance, WY



Photo Courtesy of David Porter

MEMBER DIRECTORY

MEDICAL, HEALTH & BEAUTY

Aladdin Therapy LLC 307-290-2447

355 State Hwy 111 Aladdin, WY 82710

Bear Lodge Rehabilitation Services 307-283-3516

PO Box 928 / 226 State Hwy. 585; Sundance, WY

Crook County Medical Services District 307-283-3501

www.ccmsd.org | PO Box 517 / 713 E Oak St; Sundance, WY

Crook County Veterinary Services 307-283-2115

PO Box 767 / 7 Hwy 116; Sundance, WY

Elite Fitness 307-283-1725 | www.elitefitness307.com

PO Box 429 / 220 E Main Street; Sundance, WY

Massage by April, LLC 608-393-2117

PO Box 363 / 113 S West St.; Sundance, WY

Me, Myself & Tranquility LLC 605-639-0413

PO Box 1469 / 24 Hwy 585 Suite 132; Sundance, WY

Peak Motion Physical Therapy 307-203-1495

pmptinc.com | 2719 State Hwy 585; Sundance, WY

Rehab Solutions 307-283-1725 | rehabsolutionswy.com

PO Box 429 / 220 E Main Street; Sundance, WY

Sundance Assisted Care 307-283-1042

PO Box 944 / 108 Abby Lane; Sundance, WY

Vilas Pharmacy 307-283-3883

PO Box 547 / 224 Main St; Sundance, WY

ORGANIZATIONS

Be Well Coalition 307-283-1042

PO Box 543 / 420 1/2 E Main St; Sundance, WY

Black Hills & Badlands 605-355-3600

1851 Discovery Drive; Rapid City, SD 57701

Crook County Fair 307-283-2644 | crookcofair.com

PO Box 473 / Fairgrounds Loop Rd; Sundance, WY

Crook County Senior Services 307-283-1711

PO Box 648 / 321 E Main St; Sundance, WY

High Plains Western Heritage Center 605-642-9378

westernheritagecenter.com | 825 Heritage Dr, Spearfish SD

Ranch A Restoration Foundation 307-643-3101

rancha.com | PO Box 219 / 481 Sand Creek Rd; Beulah, WY 82712

Sundance Chain Gang Mountain Bike Association

307-290-2200 | www.scgmba.org PO Box 146; Sundance, WY

Sundance Chamber of Commerce 307-283-1000

SundanceWyoming.com PO Box 1004; Sundance WY

Sundance Country Club 307-283-1191

PO Box 472 / 1612 E Cleveland St; Sundance, WY

Tri-State Museum & Visitor Center 605-723-1200

415 Fifth Ave, Belle Fource, SD 57717

OUTFITTERS

Maupin Ranch LLC 307-797-0469

2684 State Hwy 112; Hulett, WY 82720

Seven J Outfitters 307-283-3443 | sevenjoutfitters.com

PO Box 569 / 1184 Miller Creek Rd; Sundance, WY

PRODUCTS & SERVICES

Bearlodge Ag Supply 307-283-2469

103 Kara Mt. Rd; Sundance, WY

Crook County Farm Bureau Financial Service

307-283-3582 PO Box 488 / 109 N 3rd St.; Sundance, WY

CW Waste Service Inc. 307-283-3403 | cwwasteservices.com

PO Box 1478 / 3169 Old Sundance Road; Sundance, WY

Deluxe Harley Davidson 307-283-2001

chuckdeluxe.com | 2423 E Cleveland St; Sundance, WY

Dodson Enterprises Consulting 512-468-8004

PO Box 754; Sundance, WY

ET Sports 605-723-4288 | www.etsports.com

19111 US Hwy 85; Belle Fourche, SD 57717

Fidler-Roberts & Isburg Funeral Home

307-283-3334 | fidler-isburgfuneralchapels.com

PO Box 1380 / 208 Main; Sundance, WY

Hirst Applegate, LLP 307-632-0541

hirstapplegate.com | PO Box 1083; Sundance, WY

Hughes Law Office 307-283-1313

PO Box 456 / 113 N. 3rd; Sundance, WY

Kid Prints Childcare & Preschool 307-283-2682

kidprintsinc.org

PO Box 1453 / 210 South 5th Street; Sundance

Mary Sell, CPA 307-283-1190
622 E. Cleveland St; Sundance, WY

Maupin Ranch LLC 307-797-0469
2684 State Hwy 112; Hulett, WY 82720

Meadowlark Trailer 307-281-2336 | meadowlarktrailer.com
2409 E Cleveland St; Sundance, WY

Mountain High Furniture 720-383-5083
mountainhighfurniture.com
PO Box 990 / 423 E Cleveland St. Ste A, Sundance, WY

Pinnacle Bank - Wyoming 307-283-3372 | wypinnbank.com
PO Box 861 / 406 E Cleveland; Sundance, WY

Security Insurance Agency 307-283-1182
securityinsurancewy.com PO Box 189 / 309 Main St; Sundance, WY

State Farm Insurance 307-283-2187
PO Box 886 / 209 Cleveland; Sundance, WY

Sundance Hardware & Sporting Goods 307-283-2438
PO Box 340 / 204 Main; Sundance, WY

Sundance State Bank 307-283-1074 | sundancestate.bank
PO Box 950 / 123 N 2nd St; Sundance, WY

Sundance Tax 307-363-0344
PO Box 740 / 307 E. Main St; Sundance, WY

The Golf Club at Devils Tower 307-467-5773
devilstowergolf.com | 77 Tower View Dr; Hulett, WY 82720

REAL ESTATE & RENTAL UNITS

21st Street Storage 307-290-0102
PO Box 1111 / 520 South 21st St; Sundance, WY

Black Hills Title Inc 307-746-2001 | bhtitle.com
211 E Cleveland St; Sundance, WY

Commercial Property Management 262-689-8547
PO Box 459; Sundance, WY

First American Title Insurance Company 307-283-1844
firstam.com | PO Box 190 / 211 Cleveland; Sundance, WY

Holt Realty LLC 307-281-1472
PO Box 1496 / 423 E Cleveland; Sundance, WY

Leinen Storage 307-283-1564
PO Box 955 / 2301 Cleveland; Sundance, WY

Western Properties, Inc 307-283-1901 | westernpropertiesonline.com
PO Box 766 / 304 Cleveland; Sundance, WY

SPECIALTY RETAIL & PHOTOGRAPHY

1875 Gallery 307-283-3301
PO Box 63 / 120 N 4th St; Sundance, WY

Bruce Speidel Gallery 307-290-2089 | bruceSpeidel.com
PO Box 181 / 203 E. Main Street; Sundance, WY

Deluxe Harley Davidson 307-283-2001
chuckdeluxe.com | 2423 E Cleveland St; Sundance, WY

Mountain High Furniture 720-383-5083
mountainhighfurniture.com
PO Box 990 / 423 E Cleveland St. Ste A, Sundance, WY

Serendipity Floral & Gifts 307-283-3722
PO Box 1397 / 218 N 3rd St; Sundance, WY

SG Photography 307-696-5063
PO Box 1375; Sundance, WY

Sundance Girl Photography 307-231-0462
sundancegirlphotography.com | PO Box 271; Sundance, WY

Sundance Hardware & Sporting Goods
307-283-2438 | PO Box 340 / 204 Main; Sundance, WY

Vilas Pharmacy 307-283-3883
PO Box 547 / 224 Main St; Sundance, WY

Wild West Espresso 360-929-3183
PO Box 801 / 107 N. 3rd Street ; Sundance, WY

UTILITIES, CABLE & TELEPHONE

Blakeman Propane 307-283-2512
blakemanpropane.com
PO Box 1054 / 2712 St Hwy 585;
Sundance, WY

**Powder River Energy
Corporation** 307-283-3531
precorp.coop | PO Box 930
221 Main St; Sundance, WY

Range 406-347-2226
range.net | PO Box 127
Forsyth, MT 59327



Photo Courtesy of Hayden Johnston

EXPLORE THE REAL SUNDANCE

F Sundance Country Club

1612 E. Cleveland St. 307-283-1191

Sundance Country Club is a 9-hole course designed for all skill levels, that utilizes the natural landscape for its fairways and green placement. The course is generally not crowded so you can enjoy your day and beautiful views of the surrounding area. Special rates on Monday's, Men's Day on Wednesday afternoons, and Ladies Day on Thursday afternoons. Come join us, you will be glad you did.

Club and cart rentals available, open to the public, 8am to dusk on weekends and 9am to dusk on weekdays.



- Life Guard On-Duty
- Outdoor Pool
- Open Seasonally

D Public Swimming Pool



E Skate Park, Basketball Hoops, Tennis Courts & Sand Volleyball



A Clarenbach Park

- South of Downtown Sundance
- Floral gardens and play equipment
- Large covered shelter for gatherings
- On the Sundance Walking Path



Community Pages Sponsored by Sundance State Bank





Photo Courtesy of Sundance Girl Photography

Sundance
WHITE RANCH PARK

Wander and Conquer the SWRP Trails

BIKE & FOOT ENTRANCE

VEHICLE ENTRANCE

Located at 18 Hwy 116 | Sundance, WY
(See Full Sundance Map on pages 12 & 13)

Hiking, Biking & Walking Trails for
People & Pets

WhiteRanchPark.com

Paid for in part by DevilsTowerCountry.com

Sundance Sip n Walk

The Kid and Friends, Historical Reenactors

Starting at the
Crook County Gazebo
Downtown Sundance
Tue & Wed
at 6:30pm

Take a Sip n Walk through
Sundance's Wild West history.



Plan to meet a 1880's
authentic guide who
will lead you on a
stroll into the oft-time
bawdry past of the
Sundance Territory.



Crook County Museum
OPEN During
& After Tours

EXPLORE THE REAL SUNDANCE

View, Download & Request our Sundance Visitor Guide and Relocation Guide
SundanceWyoming.com



Photo Courtesy of Katelyn Ford

GPS-GUIDED TOURS



Sundance

The Streets of Sundance have seen a lot of legendary characters walk through. Take a GPS guided walking tour of Downtown Sundance. Guided by a friendly old timer on your cell phone. The free Tour starts in front of the Museum and is available 24-7. **Download the Travel Storys app.**



Northern Hills

The route goes from about 1 mile east of Aladdin along Hwy 24 to Devils Tower and includes a walking portion around Devils Tower. The tour takes visitors past the Aladdin Tipple, where coal was loaded on trains or trucks to be shipped east, then through Aladdin's 110 year old trading post. Along the Belle Fourche river, learn about the history of Hulett and visit Devils Tower. The walking portion follows the paved path around Devils Tower. The tour can be taken in either direction.

Download the Travel Storys app.

Sponsored by Crook County Promotion Board



Crook County

Spend a day on a GPS guided driving tour off the beaten path around Crook County, visit 14 historic sites around the county where history was made. The tour visits 4 museums, and Devils Tower, along with several historic places where few have traveled. Meet authentic Old West characters along the way.

Download the IZI.travel app.



FUEL UP WITH COLD DRINKS AND FRESH SNACKS!



**DECKER'S
M·A·R·K·E·T**

307-283-3155

106 N. 7th Street | Sundance, WY
www.deckersmarket.com






Geocache Roundup

Sundance Geocache Roundup is a global high-tech treasure hunt where participants can use a combination of online clues and GPS coordinates to find treasures left by history loving explorers of the Old West.

Remember you're in Outlaw Territory stranger, so check in at the Crook County Museum, 120 N 4th St in Sundance to get your passport. There are two separate missions. If you complete a mission, return to the Crook County Museum for your prize wooden coin.



RANGE™

-  VOICE
-  INTERNET
-  PHONE SYSTEMS
-  NETWORK SERVICES
-  MANAGED SERVICES

Live Your West Life

RANGE HIGH SPEED INTERNET

- Wide open spaces don't need to be lonely places.
- Whether you're exploring new frontiers or roaming closer to home, having a friend by your side can make all the difference. Since 1953, Range has been connecting customers from Wyoming, Montana, Colorado, and South Dakota across 30,000 square miles of opportunity, giving you the freedom to explore.

WE RIDE WITH YOU 24/7.

range.net • info@range.net • 800.927.2643

R
A
N
G
E
.
N
E
T

EXPLORE THE REAL SUNDANCE

1



1875 Gallery
 Gifts & Fine Art
 120 North 4th
 Sundance, WY

Photo by DevilsTowerCountry.com

2



21ST STREET STORAGE
 SELF-STORAGE UNITS 10X10 | 10X20 | 12X24
 307-290-0102 | 520 S. 21ST ST SUNDANCE, WY

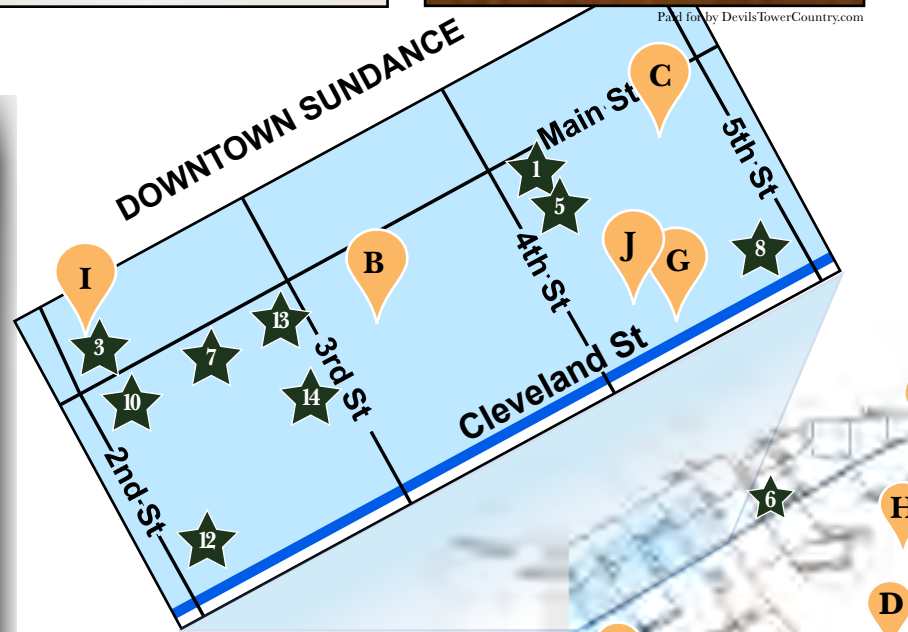
5



Crook County Museum & Art Gallery
 "Step back in time and experience the Old West"
 Summer Hours:
 Mon - Fri 8am - 4pm
 Sat & Sun 9am - 3pm
 120 North 4th
 Sundance, WY
[CrookCountyMuseum](http://CrookCountyMuseum.com)

Photo by DevilsTowerCountry.com

- ★ AREA ADVERTISERS**
- 1875 Gallery & Gifts
 - 21st Street Storage
 - Bruce Speidel Gallery
 - Buffalo Jump Saloon
 - Crook County Museum
 - Decker's Market
 - Longhorn Saloon & Grill
 - Mountain High Furniture
 - Ranch A Historic Site
 - State Line Station
 - Sundance White Ranch Park
 - Uncle Louies Dinner
 - Vilas Pharmacy
 - Wild West Espresso

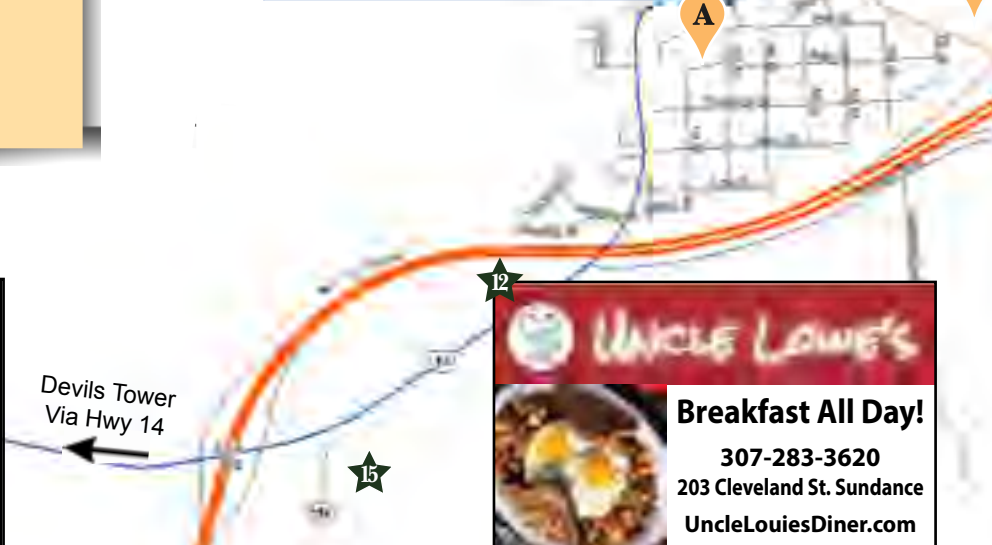


14




WILD WEST ESPRESSO
 SUNDANCE, WY
 107 N 3RD STREET | 360-929-3183

COFFEE
 SPECIALTY DRINKS
 FOOD
 & GIFTS



Devis Tower Via Hwy 14

12



UNCLE LOUIE'S
 Breakfast All Day!
 307-283-3620
 203 Cleveland St. Sundance
UncleLouiesDiner.com

15

Look for  throughout the Community Pages to find out more on the attractions!

6

DECKER'S MARKET

307-283-3155
106 N. 7th Street | Sundance, WY
www.deckersmarket.com

7

f

8 TV'S
+
16 BEERS
ON TAP

LONGHORN SALOON & GRILL

214 MAIN • SUNDANCE

TAKE-OUT AVAILABLE! 307.283.3644

K

VORE BUFFALO JUMP

13 miles east of Sundance
(3 miles east of Exit 199)

VoreBuffaloJump.org

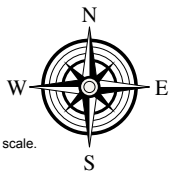
307-266-9530
Open June 1 - Labor Day

Paid for in part by DevilsTowerCountry.com



POINTS OF INTEREST

- A.** Clarenbach Park
- B.** Courthouse Gazebo
- C.** Crook County Public Library
- D.** Public Swimming Pool
- E.** Skate Park, Basketball Hoops, Tennis Courts & Volleyball
- F.** Sundance Country Club
- G.** Sundance Kid Bronze Sculpture
- H.** Sundance Pond
- I.** Sundance Senior Center
- J.** Sundance Square
- K.** Vore Buffalo Jump



11

Sundance WHITE RANCH PARK

Wander and Explore the SWRP Trails
Hiking, Biking & Mountain Trails for People & Pets
Located at I-25 Exit 116 | Sundance, WY
WhiteRanchPark.com

Paid for by DevilsTowerCountry.com

RANGE™

Live Your West Life
RANGE HIGH SPEED INTERNET

Looking for LODGING?

View our full list of member lodging on page 9 or online @ SundanceWyoming.com/lodging

OUR COMMUNITY

Sundance Wyoming is nestled in the valley of the Bearlodge Mountains in Northeastern Wyoming on the western edge of the Black Hills. History and folklore abounds in the streets that were made for freight wagons and teams of horses. The Sundance Kid did his only jail time here and you can relive the history in our Crook County museum, housed in the newly remodeled Old Stoney building downtown.

Sundance was established in 1875 as a trading post and prospered in the wide open frontier of its time. Not much has changed in the 100 plus years

- the skies are still vast and Sundance Mountain is breathtaking with its Native American Heritage and its monumental vista towering over this small town, population 1292.

Here you will experience small town hospitality. There are no lines to stand in for shopping, dining, getting fuel, or picking up groceries. Sundance is a central location which makes it a great hub for your visit in the Black Hills area. We are just a short distance from Devils Tower, from Aladdin, Wyoming with its 1880 stage stop and 125 year old general store, Vore Buffalo Jump, Keyhole Recreational Park



Photo Courtesy of Sundance White Ranch Park

& Reservoir, Spearfish Canyon, Crazy Horse, and Mount Rushmore. Stay in Sundance for a real treat on your vacation!

Located in the northeast corner of Wyoming, Sundance is situated along the eastern slope of the Rocky Mountain range in the heart of the Wyoming Black Hills. Local terrain varies from tall grass prairie to ponderosa pine covered mountains.

Sundance sits at an elevation of 4750 feet and elevations top 6000 within a few short miles from the heart of town. In the image behind the text you can see Sundance Mountain at the forefront, with the city of Sundance in the background. You can also see Green Mountain in the distance.



Photo Courtesy of Crook County Museum

OUR COMMUNITY



History doesn't have a state line, the historical aspects of the west can be seen in the Crook County Museum & 1875 Gallery in picturesque Sundance, Wyoming right off I-90.

This history of Crook County is depicted in the many dioramas and exhibits, over 7000 artifacts, newly housed in the historic Old Stoney Building.

The original court room where the Sundance Kid had his trial is on display in one of our permanent exhibits along with a gun exhibit that is phenomenal.

Experience a walk-through time in the replica bar and stable with its buggy and work tools. Glance in the bunk house that has all the amenities a cowboy bachelor could want. Listen for the sounds of stampeding buffalo hooves as you look at the Vore Buffalo Jump diorama with all its grand archeological discoveries.

Go on an adventure of a lifetime with Custer and his men as they trek through the Black Hills in the Expedition of 1874. Follow the trials and the tribulations of his men as they fight for survival against nature, the illicit miners, and the natives.

Explore Moses Anneberg's great hideaway locally known as Ranch A. When he was looking for a quiet place to relax and a place to throw some great parties for his fellow city dudes, he would come to the isolation of the Black Hills and go to his local canyon ranch to kick up his heels.



Come see the history of the Black Hills of Northeastern Wyoming!



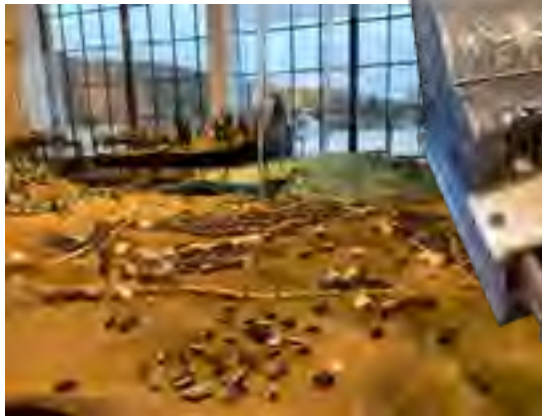


Refer to the map on pages 16 & 17 for the location of these attractions.

The 1875 Gallery offers regional artwork for sale. The wildlife, still life, interpretive, conceptual and functional art offerings include bronze sculpture, colored pencil, water color, photography, collage, oils, and hand-formed jewelry and pottery.

This museum & art gallery has it all and something for everyone. The 1875 Gallery was formed to give our local artists a place to sell, show and give others a chance to be exposed to the art world.

For Business hours call 307-283-3666.



★ Crook County Museum

Admission \$5, 12 yr & Up - High Plains History
 Dioramas, Exhibits and 7000+ Artifacts
 120 N 4th Street | 307-283-3666
 Crookcountymuseum.com Like us

OUR COMMUNITY



Photo Courtesy of SG Photography



Sundance Square

Corner of 4th & Cleveland St

The Sundance Square is the cornerstone for gatherings in Downtown Sundance. Located next to the Historic Crook County Museum, this lush park is home to the Sundance Kid Statue.

You will find hours of fun for your family as they enjoy the natural outdoor playground and splash pad. There are restrooms, picnic tables and plenty of room to stretch your legs as you stroll the historic walking path.

Sundance Square Activities

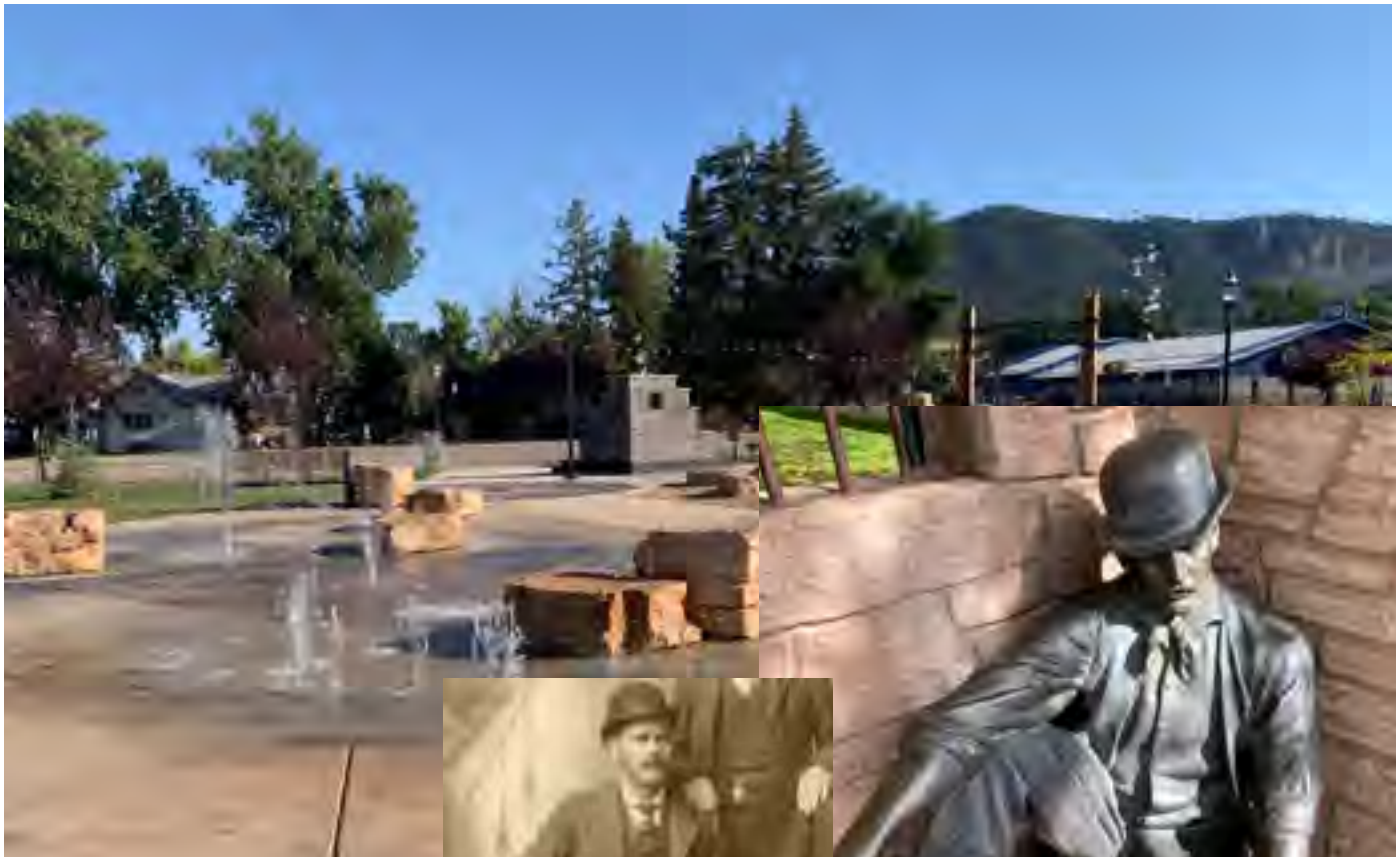
- Sundance Kid Statue
- Historic Old Stoney
- Restrooms
- Splash Pad
- Lawn Space
- Shelter/Stage & Picnic Tables
- Rock-n-Ropes Play
- Movies in the Park (pg. 26)

Community Pages Sponsored by Sundance State Bank





Refer to the map on pages 16 & 17 for the location of these attractions.



The Sundance Kid

VISIT HIM IN SUNDANCE SQUARE

One February morning in 1887, a young fella named Harry Longabaugh, later known as The Sundance Kid, was walking from the Black Hills to Montana to look for ranch work. Just north of Sundance he spotted a ranch hand who had left his horse unattended. The horse was set with a saddle and guns. Well, it was snowing and cold so Harry decided he needed that horse more than the ranch hand, so he jumped on it and took off. It wasn't long before Sheriff Ryan of Crook County caught up with Harry in Montana.



The first attempt to bring Harry to justice was unsuccessful. The second time the sheriff caught up with Harry, he spent 18 long months in the Crook County jail in Sundance. After Harry was released from jail, he became known as The Sundance Kid and joined up with Butch Cassidy and the Hole in the Wall Gang. They started the longest crime spree in American outlaw history. They robbed banks from Canada to South America but never were seen in Sundance again.



Take your photo with The Sundance Kid!



Painting by Bruce Speidel | Commissioned by DevilsTowerCountry.com

The Real Story of Potato Creek Johnny

A local legend passed down through the families in Crook County.

A prospector drifter from Deadwood, John Perrett, later known as Potato Creek Johnny, had been seen walking to Sundance on a regular basis.

One day after Johnny had left town, it was discovered that an Indian residence near Sundance Mountain had been ransacked, the floors were torn up, and the owner murdered.

About a week later word came from Deadwood that Johnny had found a huge Gold nugget in Potato Creek, which was curious because there was no gold ever found before then or since then in Potato Creek. Johnny earned the nickname Potato Creek Johnny and was never seen in Sundance again.



Aladdin General Store | Photo Courtesy of SG Photography



Refer to the map on pages 16 & 17 for the location of these attractions.



Paid for in part by DevilsTowerCountry.com

Vore Buffalo Jump

The Vore Buffalo Jump provides a unique insight into over 250 years of Native American History.

The Vore Buffalo Jump features enormous quantities of bone and stone artifacts that are perfectly preserved in discrete, precisely datable layers and held in place with a natural bowl.

Within the site are the butchered remnants of more than 4,000 bison as well as thousands of chipped stone arrow points, knives, and other tools. The materials are contained within 22 cultural levels that extend downward to a depth of nearly 25 feet.

Because only about 10% of the Vore Buffalo Jump has been excavated, there is potential for decades of scientific research in several different disciplines, archaeology, tribal ethnohistory, zoology, geology, and paleoclimatic studies. Dozens of technical papers based on data from the Vore site have already been published. Just as the Black Hills attracted Native Americans, visitors from around the world are fascinated by Plains Indians. Because it is literally a stone's throw from one of America's busiest highways, the Vore Buffalo Jump is also one of the most accessible of the major Plains Indian archaeological sites to the traveling public.

Until the late 1700s the only beasts of burden used by the Plains Indian tribes were dogs. Dogs, the first domesticated

animals in North America, were used for hunting, hauling, transporting, guarding campsites and as a food source. Breeding dogs with wolves was common. Five canine skulls have been found at the Vore Site. These skulls provide evidence that the Native Americans broke off or filed down the canine teeth of their dogs...presumably to prevent the dogs from injuring their owners or other dogs and to prevent them from chewing through their tethers. An exhibit at the Vore Site features one of these skulls.

Tours of the Vore Site are guided by trained interpretive staff. Exhibits focus on how Native American hunters "jumped" bison, the tribes who likely used the sinkhole as a bison trap, how meat and hides were used, and the artifacts left behind by the hunters. Families are welcome, a number of exhibits are geared to children.



Photo Courtesy WY Dept. of Tourism

Vore Buffalo Jump

K

- Natural sinkhole used by Plains Indians as a trap for bison
- Premier archaeological site
- Children 6 and under free, ages 7-12 \$5, and 13 & over \$13.
- Group rates are available.

13 miles East of Sundance (3 miles East of Exit 199)

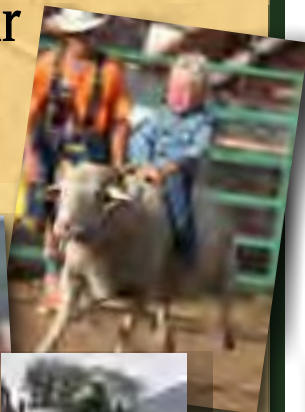
Open June 1 - Labor Day, 8am - 6pm

www.VoreBuffaloJump.org | 307-266-9530

FESTIVALS & FUN

Celebrate with us!

Crook County Fair July 20-27 Country Freedom



Photos Courtesy of Clinton Foster Photography

- Youth Rodeo/ Youth Horse Show July 20 | 10am
- Ranch Rodeo July 23 | 6pm
- Adventure Zone Bouncers July 23-27 | 12-7pm
- Preschool Story Time July 24, 25 | 10:30am
- Youth Rough Stock Rodeo July 25 | 5:30pm
- Muley Fanatic Family Fun Night July 25 | 5:30pm
- Crook County Fair Parade July 27 | 10am
- Junior Livestock Sale July 27 | 2pm



Full up-to-date schedule:
www.CrookCoFair.com

BUFFALO JUMP SALOON & STEAKHOUSE

Top Quality Beef & Buffalo Steaks
Brisket • Seafood • Pasta
Daily Specials • Fine Wine & Spirits



Located on the border of
South Dakota & Wyoming
Right off I-90, Exit 205

307-643-7173

Open 4pm Daily

View our full menu & daily specials at buffalojumpsteak.com

FREE

Sundance
**MOVIES
IN THE PARK**

JUNE 13 - AUG 15
THURSDAYS AT 7:30PM
SUNDANCE SQUARE (4TH & CLEVELAND)

MORE INFO & FULL MOVIE LIST
SUNDANCEWAYOMING.COM/EVENTS

SPONSORED BY LOCAL AREA BUSINESSES
CONCESSIONS AVAILABLE
*NO MOVIE 7/4 & 8/8

NATIONAL HISTORIC SITE

RANCHA

BEULAH, WYOMING



Historic Ranch A is nestled in beautiful Sand Creek Canyon at the edge of the Northern Black Hills close to the border of Wyoming and South Dakota. Ranch A was originally built during the 1930s as a vacation home for one of America's wealthiest families. It is now on the National Register of Historic Places.

Ranch A offers outstanding facilities for both large and small groups, and is perfect for weddings, family reunions, workshops, retreats, and business conferences.

Day use of the grounds and buildings is also available for many different types of events such as fundraising dinners, poetry gatherings, and receptions. Ranch A has WiFi and offers overnight stay accommodations in two of the original buildings.

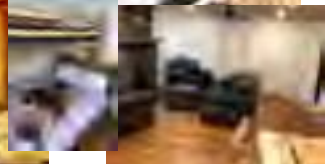
The Pete Smith Cabin sleeps up to 18 people and has recently been updated for comfort while maintaining its historic charm. Upstairs has 3 bedrooms, 1-1/2 baths, a fully equipped kitchen, a combined dining room and large living room area. The ground floor has another bedroom, an ADA compliant bathroom and a spacious meeting room that accommodates up to 40 people and is ideal for meetings, workshops, or large projects.

The Lodge at Ranch A can accommodate meetings for 120 people. In addition, there is a fully equipped commercial kitchen

with a serving/dining area. The upper level sleeps up to 48 people in 8 bedrooms (3 twin bunkbeds in each room), 6 bathrooms, and offers reading and relaxation areas.

Enjoy just walking around Ranch A and adjacent Black Hills National Forest hiking trails. The John Shoffstall Walking Path begins and ends near the Lodge and crosses over Sand Creek several times. Picnic tables and benches invite you to enjoy the scenery and the wildlife. While no hunting is allowed, visitors with valid Wyoming fishing license have access to Sand Creek, a world class fly-fishing stream.

Golf courses, restaurants, shopping and entertainment are available in the nearby towns. Devils Tower National Monument, Vore Buffalo Jump, Spearfish Canyon, Deadwood, Mount Rushmore and the Black Hills are short drives from Ranch A.



Paid for by DevilsTowerCountry.com

★ Historic Ranch A

5 miles south of I-90 Exit 205

Information and Reservations: 307-643-3101

Ranch.a.lodge@gmail.com | www.rancha.com

FESTIVALS & FUN

Celebrate with us!

Wednesday, August 7

Sundance's Annual Burnout Wednesday

Music in the streets, food vendors, and the notorious motorcycle burnout competition! All day events and excitement.

For burnout info, call 307- 283-2575.



Photo Courtesy of April Smith

SEASONAL EVENTS

April 1 - September 30

Sundance Volksmarch (5k or 10k)

Starting point: Sundance Travel Center. Walk into town on sidewalks past historic buildings, and other points of interest, while enjoying the walk/bike path for our city parks. More information at www.bhva.org or call 307-290-0746.

Devils Tower Volksmarch (11k)

Starting point: Devils Tower Trading Post
More information at www.bhva.org or call 307-290-0746.

Painting Classes by Bruce Speidel

Bruce Speidel is a local wildlife artist sharing his painting techniques.

More information at brucespeidel.com

MOVIES IN THE PARK

June 13 - August 15th
Thursdays at 7:30pm

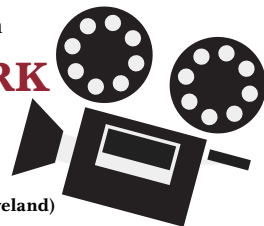
Sundance Square (Corner of 4th & Cleveland)

Bring the family and join us for a different movie all summer long! Enjoy on-site concessions and bring your own chairs or blankets.

See the full movie list on our website

sundancewyoming.com/events

(No movie 7/4/24, Make up date 8/8/24)



Sundance Farmers Market

June 7 - October 4
Fridays 4 pm - 7 pm

Sundance Square (Corner of 4th & Cleveland)
Contact Ed to become a Vendor 307-281-1420

Fresh produce and other vendors
throughout the summer.



July - August

Sip n Walk Living History Tours

Live reenactment of Sundance's Wild West history.



Tuesdays & Wednesdays - 6:30pm | July 9 - August 28

Starting at the Crook County Gazebo, Downtown Sundance. Adults & Children welcome.

Tickets available at the museum. Group Rates Available
Call the Crook County Museum 307-283-3666 for more info.

Sundance Rodeo Club

June 11, 25 & July 9. (Rain Date August 6)

www.facebook.com/sundancerodeoclub

Questions, contact sundancerodeoclub@gmail.com

MONTHLY EVENTS

MAY

May 4 - Saturday 9am - 2pm

Mother's Day Vendor Fair

9am - 2pm Sundance Central Office Gym, 122 Hwy 585, Sundance. Contact Tina with questions htsjsimpson@gmail.com

JUNE

June 1 - Saturday

Vore Buffalo Jump Open House

8am - 6pm Free Admission! vorebuffalojump.org

June 7, 8 & 9

Crook County

Junkin' Weekend

- Fuel up the truck to shop over 50 Sales
- Circle the county for your next great treasure!

Full details on our website SundanceWyoming.com/events

Check the chambers website for an up-to-date Event List!

www.SundanceWyoming.com/events



Your source for power and information.



POWDER RIVER ENERGY CORPORATION

A Touchstone Energy[®] Cooperative



1-800-442-3630

www.precorp.coop

Outage reporting:

1-888-391-6220

FESTIVALS & FUN

Celebrate with us!

SUNDANCE FESTIVALS

Sundance Winter Festival

February 15th, 2025 | 8th Annual

Join in the extreme fun of ski joring with horses, or have fun participating in other fun winter events & so much more!

Fun for the whole family with delicious food vendors and fun drink specials throughout town.



Photo Courtesy of Sundance Girl Photography

Date, schedule of events and more information available at www.SundanceWinterFestival.com

MONTHLY EVENTS

JULY

July 20 - July 27

Crook County Fair

(see Page 26)

AUGUST

Cemetery Walks

6:30 pm - Free for all ages.

August 1st - Mt. Moriah Cemetery, Sundance

August 15th - Hulett Cemetery, Hulett

Contact 307-290-3111 for more information.

August 7 - Wednesday

Sundance's Annual "Burnout Wednesday"

Music in the streets, food, vendors, and the notorious motorcycle burnout competition!

All day entertainment! Burnouts start at 4pm

For more information call 307-283-2575

August 9 - Friday

Old Stoney's Birthday

Join us for Old Stoney's birthday celebration! For more information please contact the Crook County Museum 307-283-3666



Photo Courtesy of Clinton Foster Photography



Photo Courtesy of David Porter

MONTHLY EVENTS

September 15 - Sunday

Bearlodge Mountain Classic

Mountain bike race through the Bearlodge mountains. Courses for all skill levels. More information at www.scgmba.org

OCTOBER

October 26 - Saturday

Fall Vendor Fair

9am - 3pm Shooting Sports Building, Crook County Fairgrounds. Sundance. Contact Tina with questions htsjsimpson@gmail.com

NOVEMBER

November 30 - Saturday

Ladies Night Block Party

Downtown Sundance 5pm - 8pm. Vendor email sundance.chamber@gmail.com



DECEMBER

December 6 - Friday

Annual Festival of Lights Parade

Main Street Sundance 5:30pm
A beautiful lighted parade illuminates Main Street Sundance! Local events before and after the parade throughout town. More information at www.SundanceWyoming.com or 307-283-1000

December 21 - Saturday

Christmas Bazaar

9am - 3pm Sundance Central Office Gym, 122 Hwy 585, Sundance. Contact Tina with questions htsjsimpson@gmail.com

Check the chambers website for an up-to-date Event List!
www.SundanceWyoming.com/events



Photo Courtesy of Becky Stoddard